

ehcoBUTLER

ICT solutions for independent living with cognitive impairment

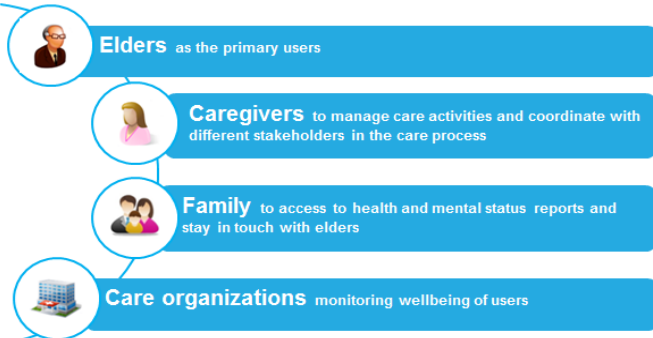
The **ehcoBUTLER Project** aims at the development & validation of an ICT social and e-health technological platform to assist seniors with cognitive impairment and promote health, satisfaction and personal wellbeing with different intervention levels.

The platform is focused to the family, caregivers and social care systems to share information and realize about patient's physical, social and mental health potential throughout leisure ICT activities, clinical guidelines and a disease-driven agenda.

ehcoBUTLER will be validated in 8 pilots in 7 different countries and will focus on four different business cases and investment returns:

- Public Care Organizations
- Elder Centres
- Support to everyday life organizations
- Telecare & TeleHealth Companies

ehcoBUTLER Target Users



everis Spain SLU



Centros de Investigación Biomédica en Red



National Foundation for the Elderly



YourDATA SRL



Fundación INTRAS



VIDAVO SA



ASISTEL



Association E-Seniors



Associazione Italiana Malattia Alzheimer



IDEA Innovación Asistencial



Clalit



Telefónica Móviles España



Senlab



A global ecosystem for the independent and healthy living of elder people with mild cognitive impairments



This project has received funding from the European Union's Horizon 2020 research and innovation programme under Grant Agreement 643566

Key characteristics of the ehcoBUTLER Platform

- **ehcoBUTLER allows the inclusion of seniors to ICT**, by offering an accessible and easy to use interface which minimizes the gap between user and machine. ehcoBUTLER will be an “age-friendly” environment accessible through personal computers and tablet devices.
- **ehcoBUTLER offers apps to promote healthy activities.** Modules of reading, walking, listening music or anything that is physically or cognitive stimulating benefit the physical wellbeing and contribute to improve the psychological and cognitive status of elders, extending the time they can remain physically independent.
- **ehcoBUTLER incorporates brain training apps** by including therapeutic games and cognitive training programs.
- **ehcoBUTLER provides mood and anxiety evaluation tools** that help caregivers and/or relatives to decide the most appropriate playful or therapeutic option and, in case it is necessary, to facilitate psychological techniques and support procedures.
- **ehcoBUTLER allows elders to stay connected to social networks** by providing tools of email, videoconference and chat that allow elders, family members and caregivers stay in touch.
- **ehcoBUTLER incorporates a digital shared agenda**, between the elder person and her/his caregiver, in order to organise the daily routine of the elder person, combining routine activities and pleasurable activities with meds administration patterns.

ehcoBUTLER Platform Components

The ehcoBUTLER platform has been developed as a modular application based on two groups of modules, the Leisure Module and the Care Module, which include among other features:

Leisure Module

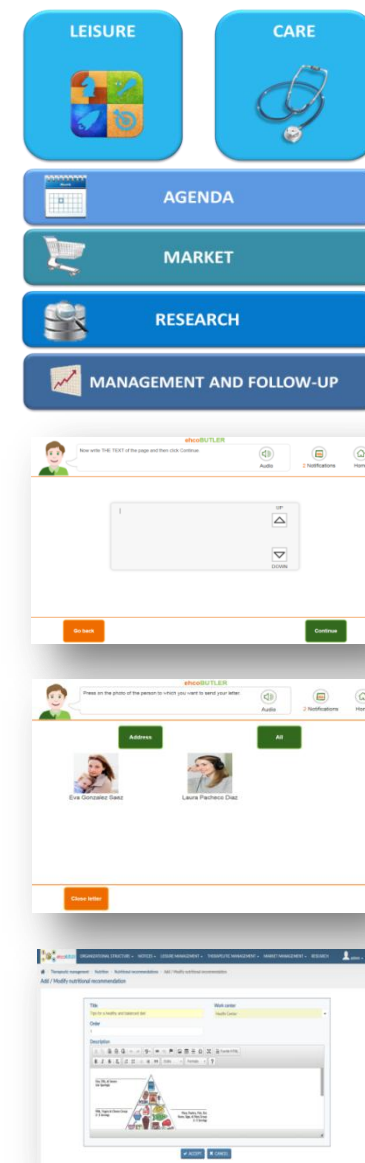
- **Contact Management** (friends) inside the platform*
- **Videoconference***
- **Email**
- **Digital Walking***
- **Internet**
- **My memories**
- **The Book of Life***
- **Cognitive training** through the integration with GRADIOR Leisure tool

Care Module

- **Nutritional Recommendations / Personalized Diets**
- **Lifestyle recommendations**
- **Anxiety/Depression screening**
- **Integration with physical activity sensors**
- **Cognitive Therapies** through the integration with GRADIOR Care.

* These features are also used for caring users based on relaxing techniques, reminiscence therapy and tele-assistance.

These modules are accompanied by horizontal modules such as the *Agenda*, which will support the therapeutic modules, the *Market*, which will allow users to download new applications made by third-parties to be incorporated to the ehcoBUTLER platform, a *Research Module*, that will allow specialists to design and implement several predictive models to detect patterns on user's evolution, and a *Management and Follow-Up* module which will control the status of user and manage their information.



More info at:
www.ehcobutler.eu

